



Formerly the  
Conflict-Free Sourcing Initiative

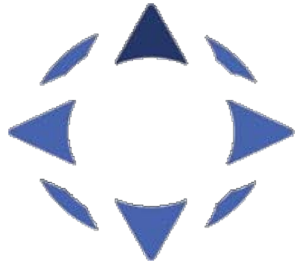
# Responsible Minerals Initiative

June 2019



## Who is RMI?

---



### Responsible Business Alliance

Formerly the Electronic Industry Citizenship Coalition

---

Advancing Sustainability Globally



Founded in 2004 the Responsible Business Alliance is the world's largest industry coalition dedicated to electronics supply chain responsibility.

German DD legislation  
2020?

**French Due  
Diligence Law**



**Swiss RB Initiative**



**CAATSA**

- ✓ Conflict Minerals Leg
- ✓ Non-Fin Disclosure
- ? Euro Parliament Res on GVC

**FAR**

**HR  
7089?**

**CA  
TISCA**

**DFA  
1502**

**UK MSA**

**Dutch Child  
Labour Law**

**US Tariff  
Act +  
USMCA**

**U.N Biz &  
Human  
Rights  
Treaty**

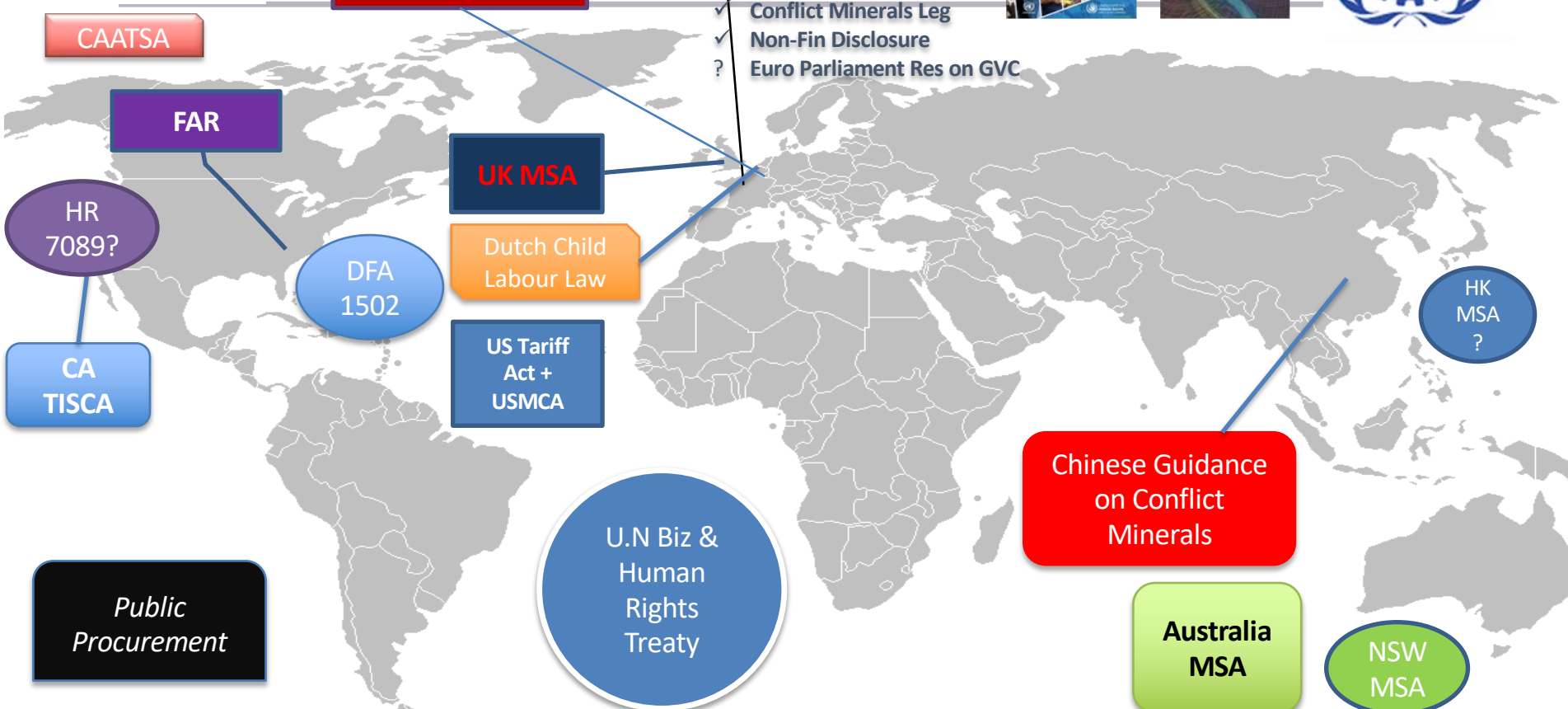
**Public  
Procurement**

**Chinese Guidance  
on Conflict  
Minerals**

**Australia  
MSA**

**NSW  
MSA**

**HK  
MSA  
?**





# RMI Mission

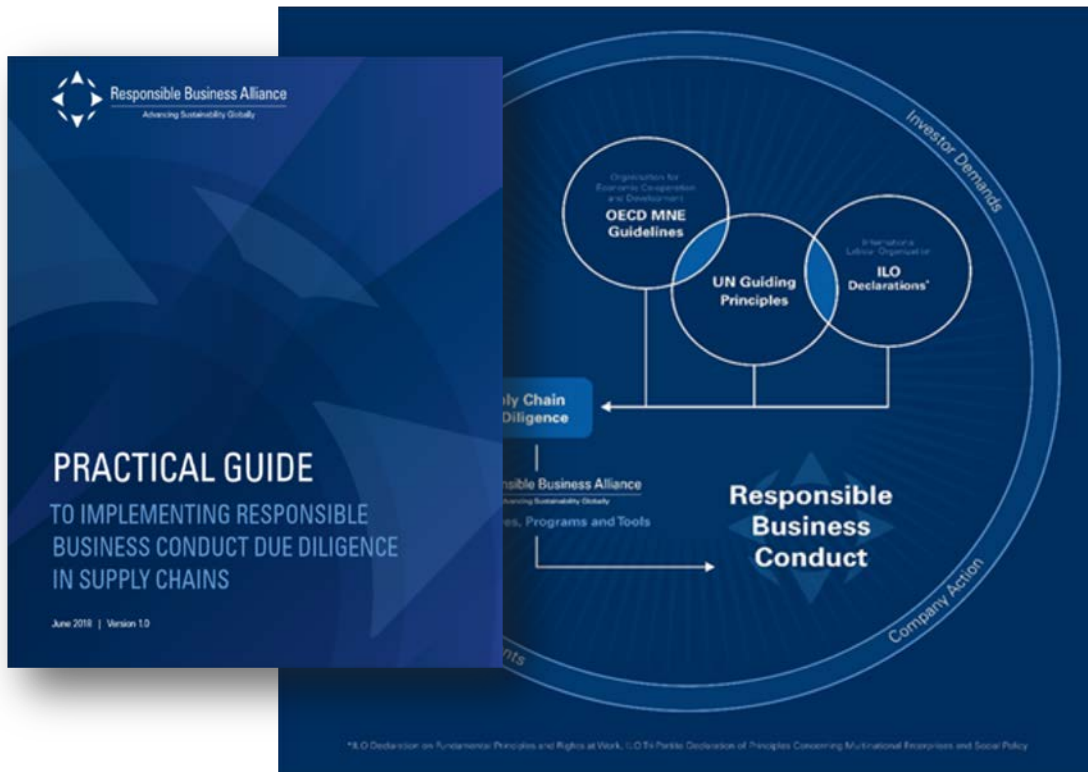
---

Provide companies with tools and resources to make sourcing decisions that **improve regulatory compliance** and **support responsible sourcing from conflict-affected and high-risk areas.**





# Rooted in Regulations, International Guidance, and Industry Best Practice





# Evolution of the Initiative

	2007	2014	2016	2017
<b>Members</b>	65	200	340	361
<b>Composition</b>	Electronics	Multi-industry	Multi-industry	Multi-industry
<b>Drivers</b>	NGO	DFA, OECD	DFA, OECD, EU, China, NGO, Members	DFA, OECD, EU, China, NGO, Members, SRIs +
<b>Minerals</b>	tin, tantalum, cobalt	3TG	3TG	3TG +
<b>Geographic emphasis</b>	DRC	Covered Countries	Global CAHRAs	Global
<b>Risk emphasis</b>	Conflict	Conflict	OECD Annex II risks	OECD MNE Guidelines, UN Guiding Principles
<b>Recognition</b>	New initiative	Dodd-Frank Compliance	Global 3TG Due Diligence	Global Raw Materials Due Diligence



# Material Risk Research

- **Industry level research to:**
  - Drive collective engagement;
  - Support company-level due diligence
- Joint project RMI – Drive, researched by TDI
- 37 raw materials commonly used in electronics / automotive industries
- Industry importance and environmental, social and governance risks
- Published July 2018
  - [Press Release](#)
  - [Report Link](#)

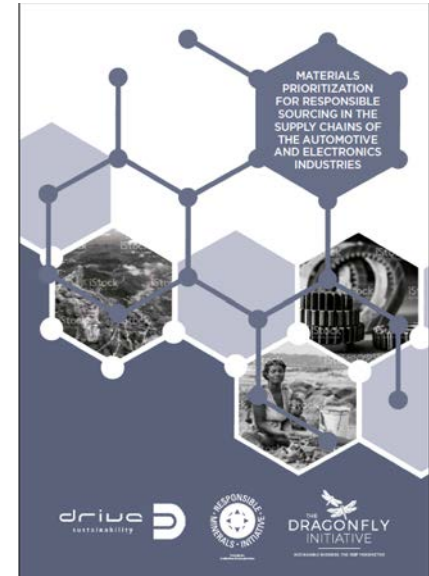
## Materials Profile: Aluminium (Al)

Lightweight and structurally strong

Please see [www.dragonflyinitiative.com/50000](http://www.dragonflyinitiative.com/50000) for the methodology and a guide to the criteria and indicators used to generate the information within this profile. Please also note that this document is intended as a tool to help inform, rather than a replacement for, decision-making in material supply chains.

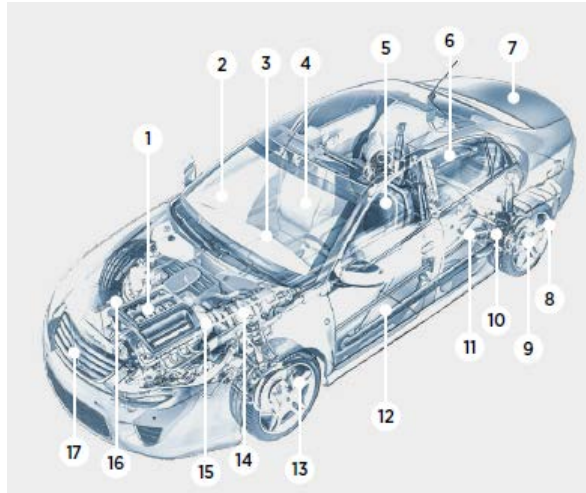
Material uses	Passenger vehicle	Smartphone
Applications of Al:	Chassis, engine, wheels	Printed circuit boards, casing
Other profiled materials in these applications:	Steel	Copper, nickel, gold
<b>Material significance</b>	Low	High
Al content in a passenger vehicle or smartphone:	Low	High
Industry consumption:	Low	High
Other top consuming industries:	Aerospace, other transport, packaging, construction, machinery, consumer durables	
Function criticality:	Low	High
<b>Supply significance</b>		
EU dependency on imported material:	Low	High
US dependency on imported material:	Low	High
Residual End Of Life waste:	Low	High
Consumption of virgin material:	Low	High
Estimated rate of depletion:	Low	High
<b>Strength of association with environmental, social and governance issues</b>		
Artisanal & small-scale mining	Low	High
Child labour and forced labour	Low	High
Conflict minerals legislation	Low	High
Conflict with indigenous Peoples	Low	High
High CO2 emissions	Low	High
Political conflict	Low	High
Preconditions for radioactive waste	Low	High
Serious health and safety issues	Low	High
Significant threats to biodiversity	Low	High
Use of toxic chemicals and/or inherent toxicity	Low	High
Water and/or soil pollution	Low	High
Weak governance	Low	High

DEVELOPED BY THE DRAGONFLY INITIATIVE FOR DRIVE AND RMI, APRIL 2018





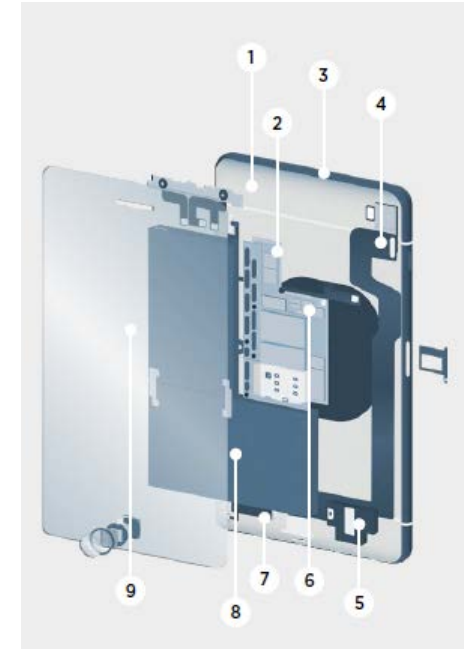
# Multi-Industry Supply Chain Research



## 37 selected materials found in automotive and electronics products

Box 1

Antimony	Molybdenum
Aluminium	Nickel
Beryllium	Niobium
Bismuth	Palladium
Chrome & Chromium	Plastics
Cobalt	Platinum
Copper	Rare Earth Elements
Gallium	Rhodium
Germanium	Ruthenium
Glass ( <i>silica sand</i> )	Rubber ( <i>natural</i> )
Gold	Silver
Graphite	Steel ( <i>iron</i> )
Indium	Tantalum
Lead	Tin
Leather	Titanium
Lithium	Tungsten
Magnesium ( <i>Magnesite</i> )	Vanadium
Manganese	Zinc
Mica	





# Relevant Risk Areas

Governance	Labor & Working Conditions	Environment	Community	Business & Human Rights
<ul style="list-style-type: none"><li>1. Legal Compliance, Engagement</li><li>2. Business Integrity</li><li>3. Stakeholder Engagement</li><li>4. Business Relationships</li></ul>	<ul style="list-style-type: none"><li>5. Child Labor</li><li>6. Forced Labor</li><li>7. Freedom of Association and Collective Bargaining</li><li>8. Discrimination</li><li>9. Gender Equality</li><li>10. Working Hours</li><li>11. Remuneration</li><li>12. Occupational Health and Safety</li></ul>	<ul style="list-style-type: none"><li>13. Environmental Risk Management</li><li>14. Greenhouse Gas (GHG) Emissions</li><li>15. Energy Consumption</li><li>16. Fresh Water Management and Conservation</li><li>17. Waste Management</li><li>18. Tailings Management</li><li>19. Pollution</li><li>20. Biodiversity and Protected Areas</li><li>21. Mine Closure and Reclamation</li></ul>	<ul style="list-style-type: none"><li>22. Community Health and Safety</li><li>23. Community Development</li><li>24. Artisanal and Small Scale Mining</li></ul>	<ul style="list-style-type: none"><li>25. UN Guiding Principles on Business and Human Rights</li><li>26. Security and Human Rights</li><li>27. Indigenous Peoples Rights</li><li>28. Land acquisition and resettlement</li><li>29. Cultural Heritage</li><li>30. Conflict Minerals</li><li>31. Grievance Mechanism</li></ul>



# Building a collaborative community

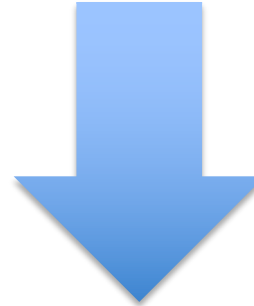
---

**RRA is intended to create improved linkages between companies that will translate into:**

- Better understanding and awareness of risks and responsible practices in mineral supply chains
- Improved communication of responsible sourcing expectations and performance
- Improved environmental, social and governance practices



Upstream users (smelters, refiners, mine sites): **self-assessment** and **self-reporting** of risk management practices and performance



Downstream users: relevant **information on risk management** practices in the upstream supply chain



# Current participation

## Current Uptake

Over 250 companies active (trader, smelter/refiner, mining, manufacturing, recycler)

Over 650 RRAs completed and shared

Covers 31 risk areas: Governance, Environment, Business and Human Rights, Community, Labor and Working Conditions

15 minerals/metals included: Aluminum, Alumina, Tantalum, Steel, Mica, Nickel, Lithium, Iron Ore, Gold Tungsten, Graphite, Bauxite, Cobalt, Copper, Tin

## Voluntary Standards

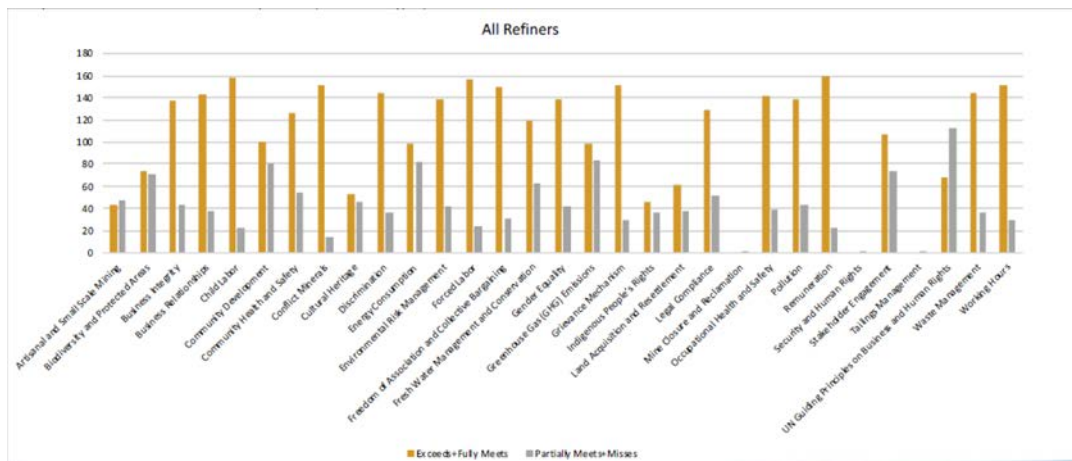
Downstream

RRA

Mines



# Trends and Data



## RISK READINESS ASSESSMENT ONLINE PLATFORM

AN ANALYSIS OF USAGE, PERFORMANCE,  
AND USER EXPERIENCE - YEAR 1

February 2019



# Mining Engagement Team

---

## Activities

Identify and implement practical steps to strengthen linkages

Facilitate communication and promote the recognition of responsible practices

## Purpose

Improve direct upstream-downstream communication

Avenue for better recognition of voluntary standard systems in RMI

## Practicalities

RMI members, mineral producers, associations, voluntary standard systems for LSM and ASM

Kick-off: Mid-November 2018



## Partnership with ASI

---

MoU signed in 2018 to:

- Exchange information
- Align and where possible cross-recognize supply chain expectations
- Promote the use of existing tools and resources
- Data sharing where appropriate

ASI is a member of the RMI Mining Engagement Team:

- Active participant in the RRA review process
- Pilot participant for the RRA equivalency function



For further inquiries:

Michèle Brühlhart  
Director of Innovations  
Cell: +41 78 723 5005  
[mbruelhart@responsiblebusiness.org](mailto:mbruelhart@responsiblebusiness.org)

