

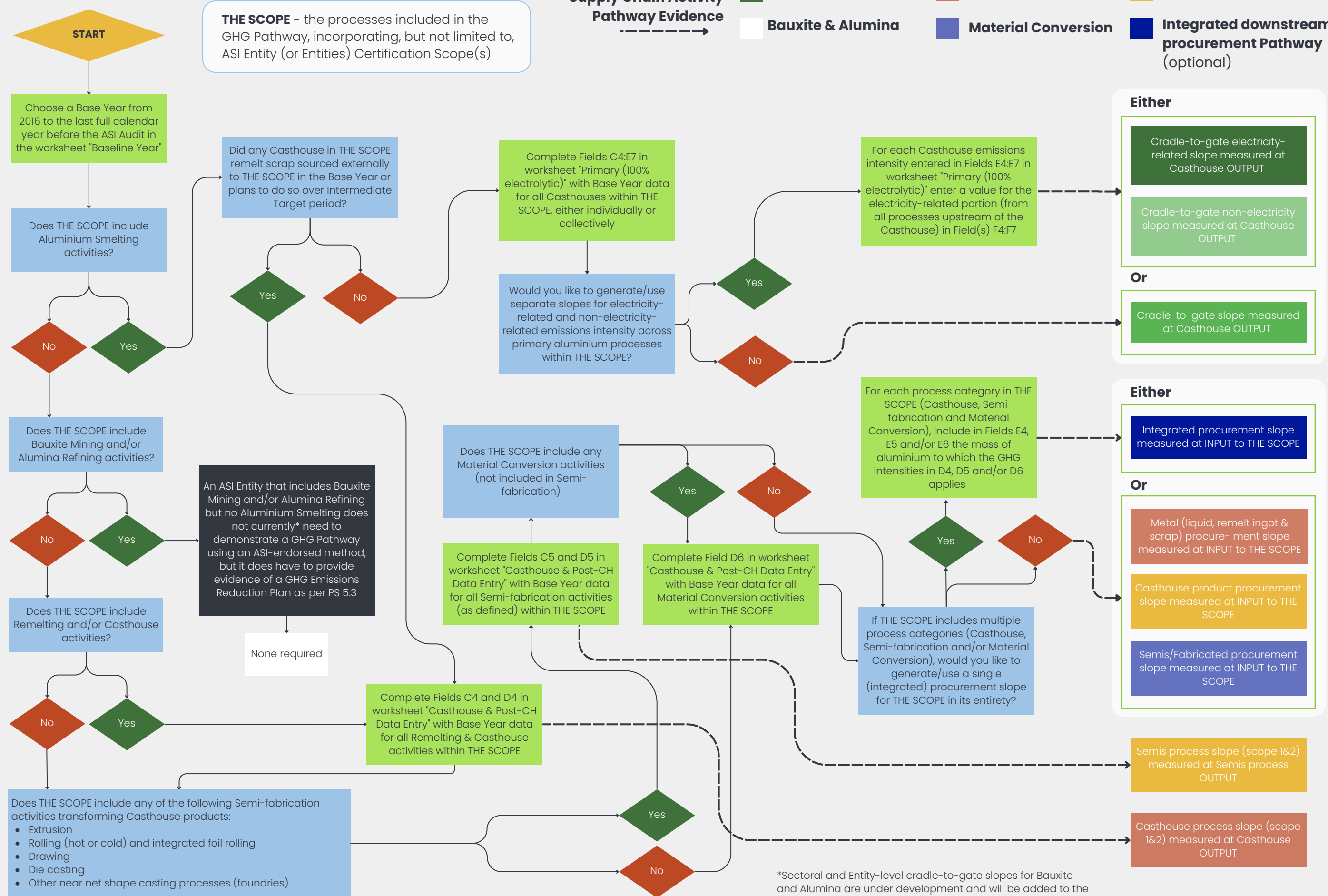
# GHG Pathways Decision Tree

Key: ■ Decision ■ Action (Via GHG Pathways Calculation Tool)

Supply Chain Activity Pathway Evidence

<span style="color: green;">■</span> Primary Aluminium	<span style="color: orange;">■</span> Casthouse	<span style="color: yellow;">■</span> Semi-fabrication
<span style="color: white;">■</span> Bauxite & Alumina	<span style="color: blue;">■</span> Material Conversion	<span style="color: darkblue;">■</span> Integrated downstream procurement Pathway (optional)

**THE SCOPE** - the processes included in the GHG Pathway, incorporating, but not limited to, ASI Entity (or Entities) Certification Scope(s)



\*Sectoral and Entity-level cradle-to-gate slopes for Bauxite and Alumina are under development and will be added to the method and Performance Standard Guidance (likely 2025)